

THE SLUM WITH WHITE BLOCKS

LAM TEI #4

This narrow piece of land at the back of Lam Tei might never had much agricultural use. Trees are sparse, but might have been numerous before two illegal structures were erected.

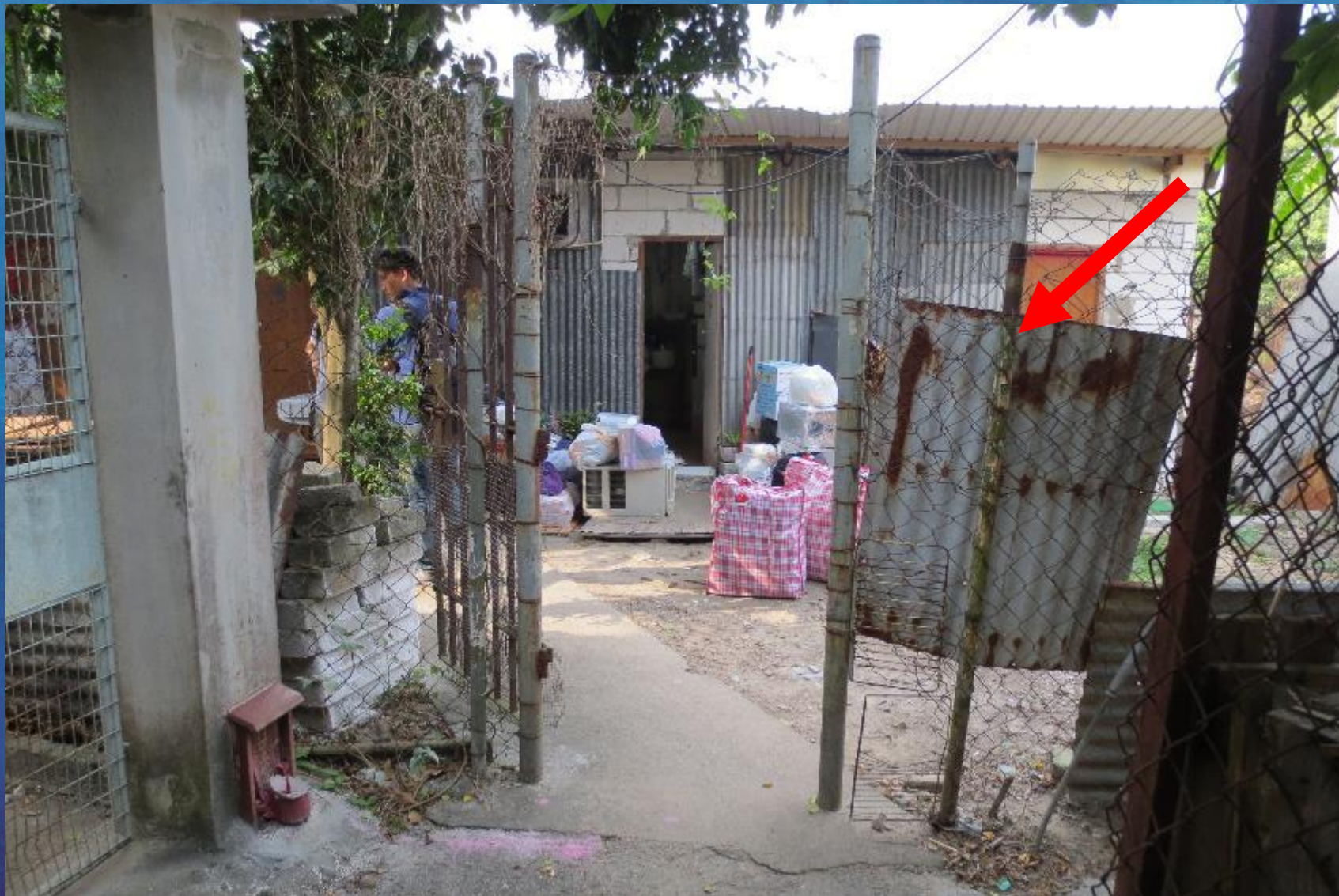
The landlord turned to ISS-HK to make a profit and became another petty Slum Lord. His *rooms* were quickly constructed with white cinder blocks assembled like Lego for a quick buck!

ISS-HK has settled 10 refugees from Pakistan and Sri Lanka in this compound hidden away between abandoned shacks, animal sheds and ancestral homes inhabited by residents.



[VISION
FIRST]

SAFEGUARDING REFUGEE RIGHTS



[VISION
FIRST]

SAFEGUARDING REFUGEE RIGHTS



Unused material
stacked aside

[VISION
FIRST]

SAFEGUARDING REFUGEE RIGHTS



Slapped together
in a hurry

[VISION
FIRST]

SAFEGUARDING REFUGEE RIGHTS



Refugees move
in and out

[VISION
FIRST]

SAFEGUARDING REFUGEE RIGHTS



[VISION
FIRST]

SAFEGUARDING REFUGEE RIGHTS



5 block wide
13 blocks high

[VISION
FIRST]

SAFEGUARDING REFUGEE RIGHTS



A refugee for
10 years

[VISION
FIRST]

SAFEGUARDING REFUGEE RIGHTS



5 block wide
13 blocks high

[VISION
FIRST]

SAFEGUARDING REFUGEE RIGHTS



[VISION
FIRST]

SAFEGUARDING REFUGEE RIGHTS



Probably zoned
as woodland



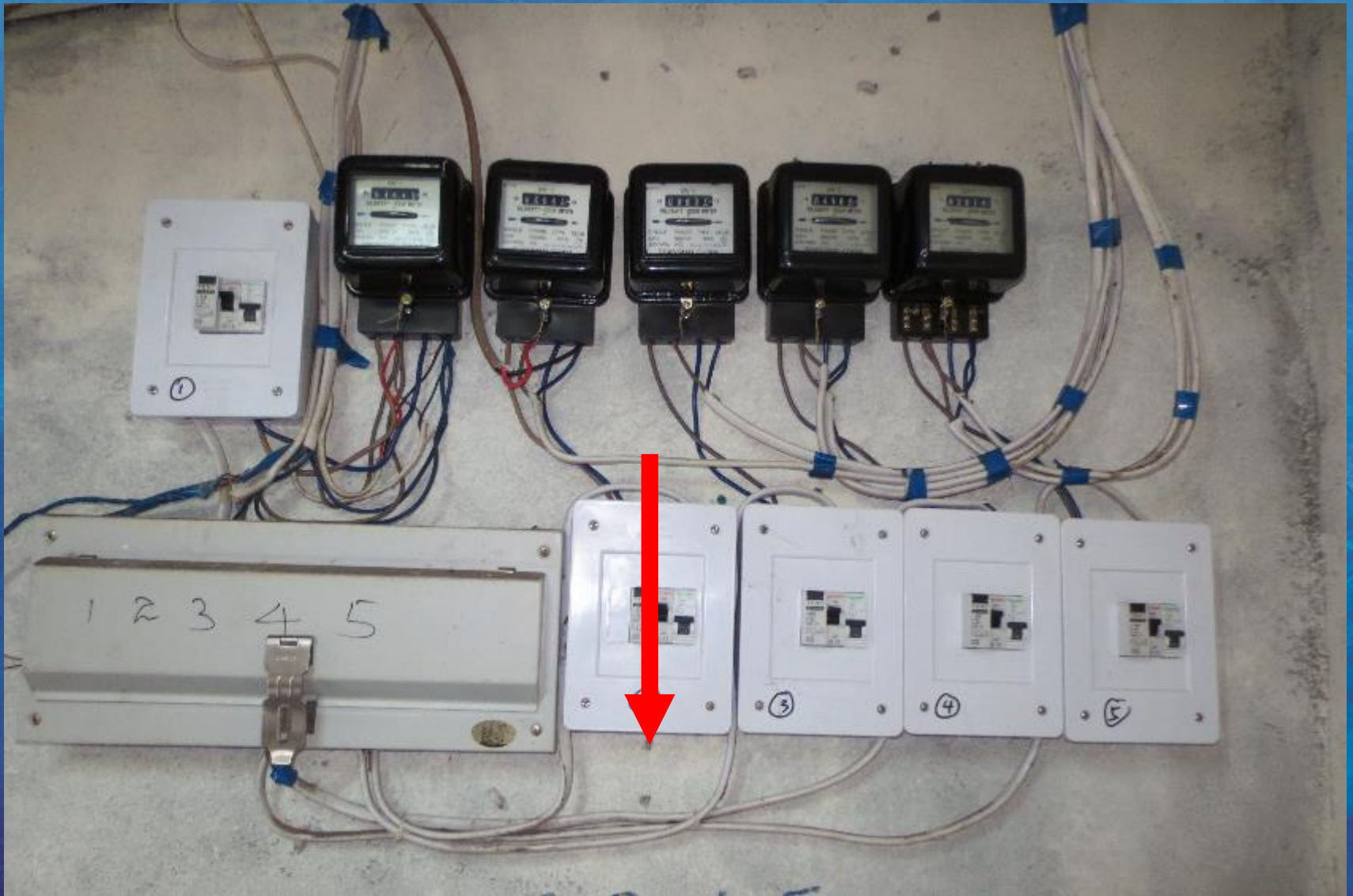
[VISION
FIRST]

SAFEGUARDING REFUGEE RIGHTS



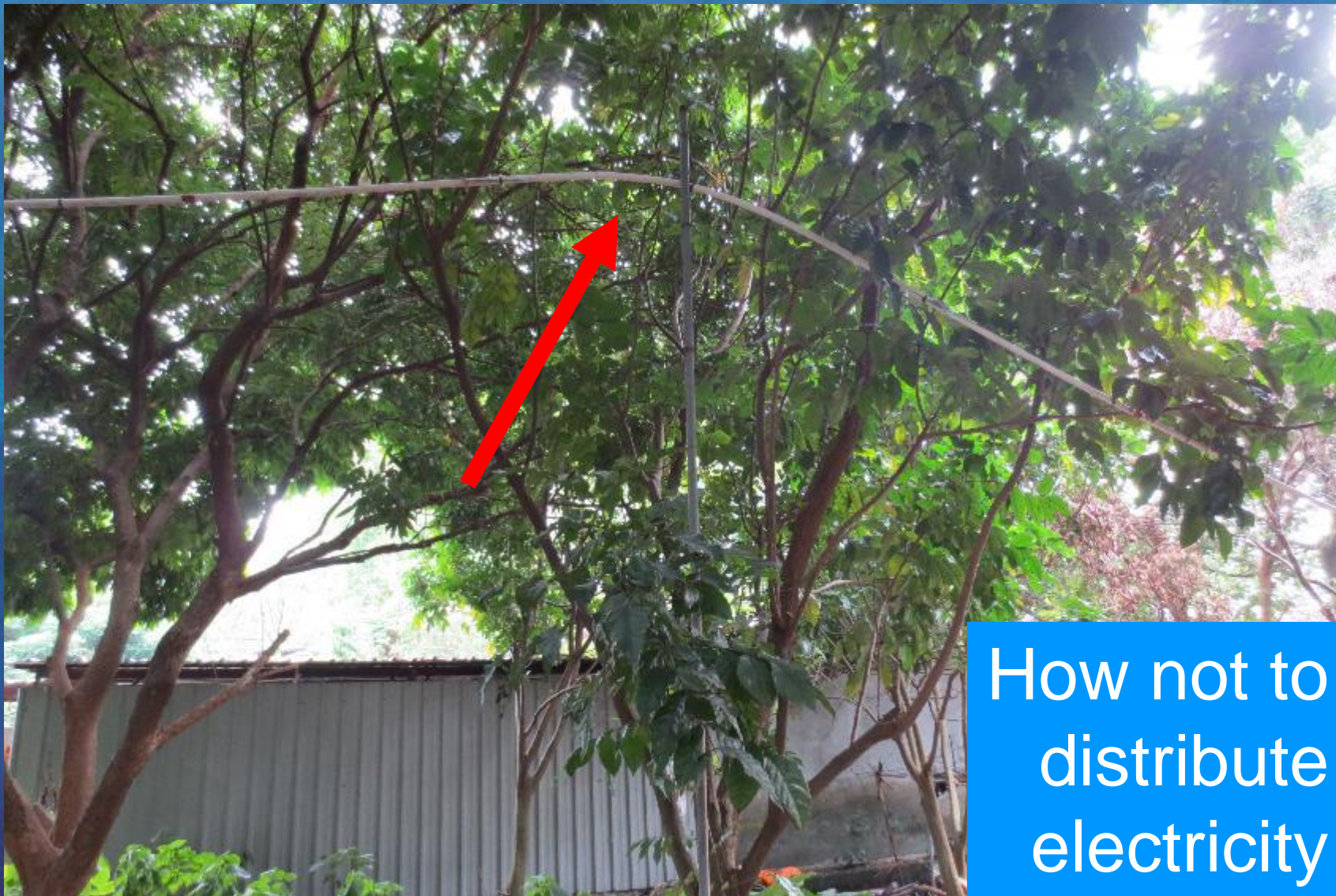
[VISION
FIRST]

SAFEGUARDING REFUGEE RIGHTS



[VISION
FIRST]

SAFEGUARDING REFUGEE RIGHTS



How not to
distribute
electricity

[VISION
FIRST]

SAFEGUARDING REFUGEE RIGHTS

Notice the
homes behind



[VISION
FIRST]

SAFEGUARDING REFUGEE RIGHTS



[VISION
FIRST]

SAFEGUARDING REFUGEE RIGHTS



[VISION
FIRST]

SAFEGUARDING REFUGEE RIGHTS



[VISION
FIRST]

SAFEGUARDING REFUGEE RIGHTS



[VISION
FIRST]

SAFEGUARDING REFUGEE RIGHTS



[VISION
FIRST]

SAFEGUARDING REFUGEE RIGHTS



[VISION
FIRST]

SAFEGUARDING REFUGEE RIGHTS



SAFEGUARDING REFUGEE RIGHTS