

THE SLUM WITH TIN HOUSES

YUEN LONG #6

ISS has housed refugees here at least since 2008. The landlord family is dissatisfied with slow rent payments. But can they be picky about their tenants?

A cluster of illegal brick and mortar structures has been weather-proofed with metal sheets. Decay and abandonment betray these shacks' appearance of permanence

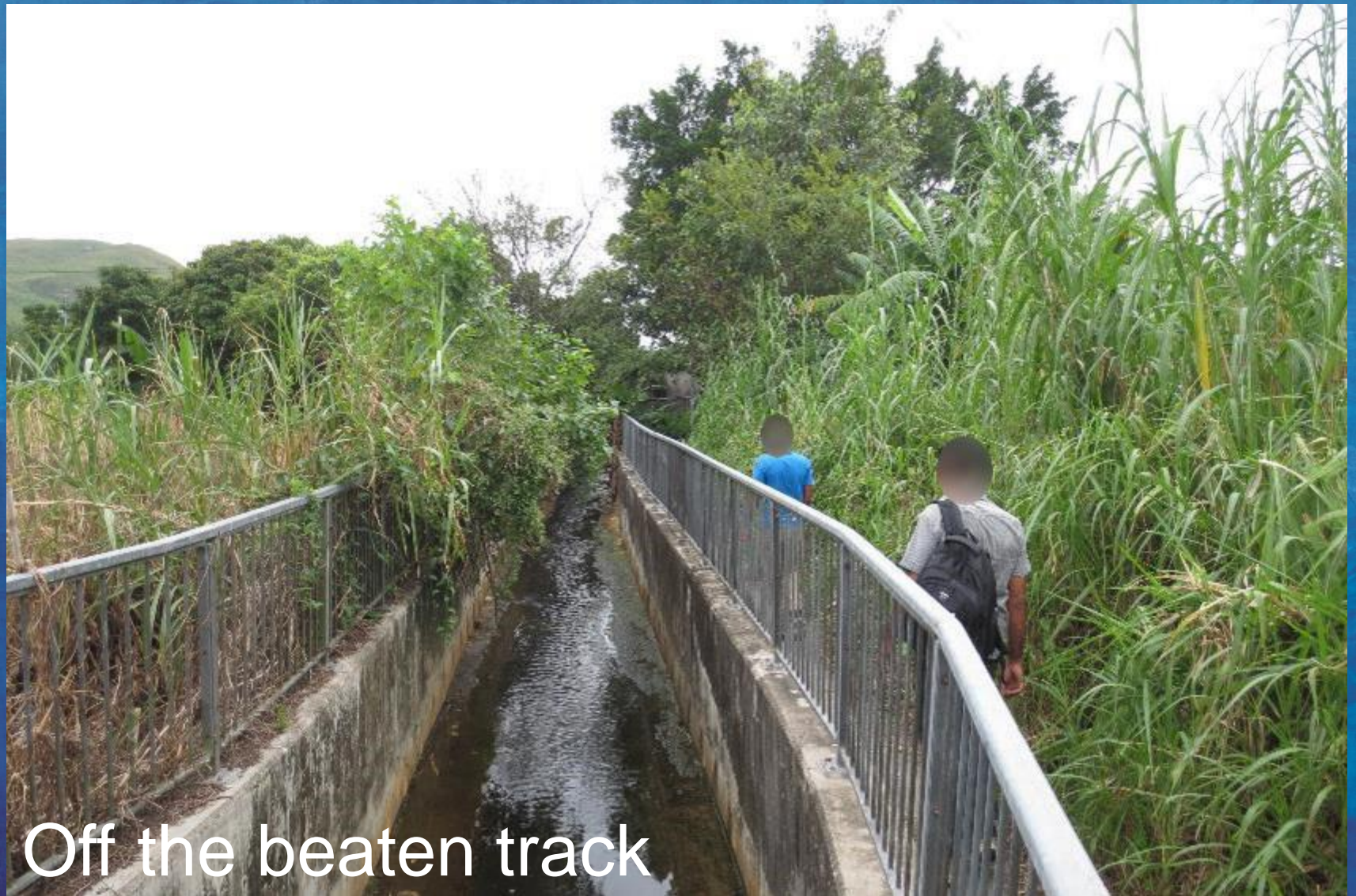
20 refugees from Nepal, Pakistan, Bangladesh and India lived here for an average of three years. The site has a bad reputation as triads repeatedly attempt to control this area.



Improved signage for ISS visits

[VISION
FIRST]

SAFEGUARDING REFUGEE RIGHTS



Off the beaten track

[VISION
FIRST]

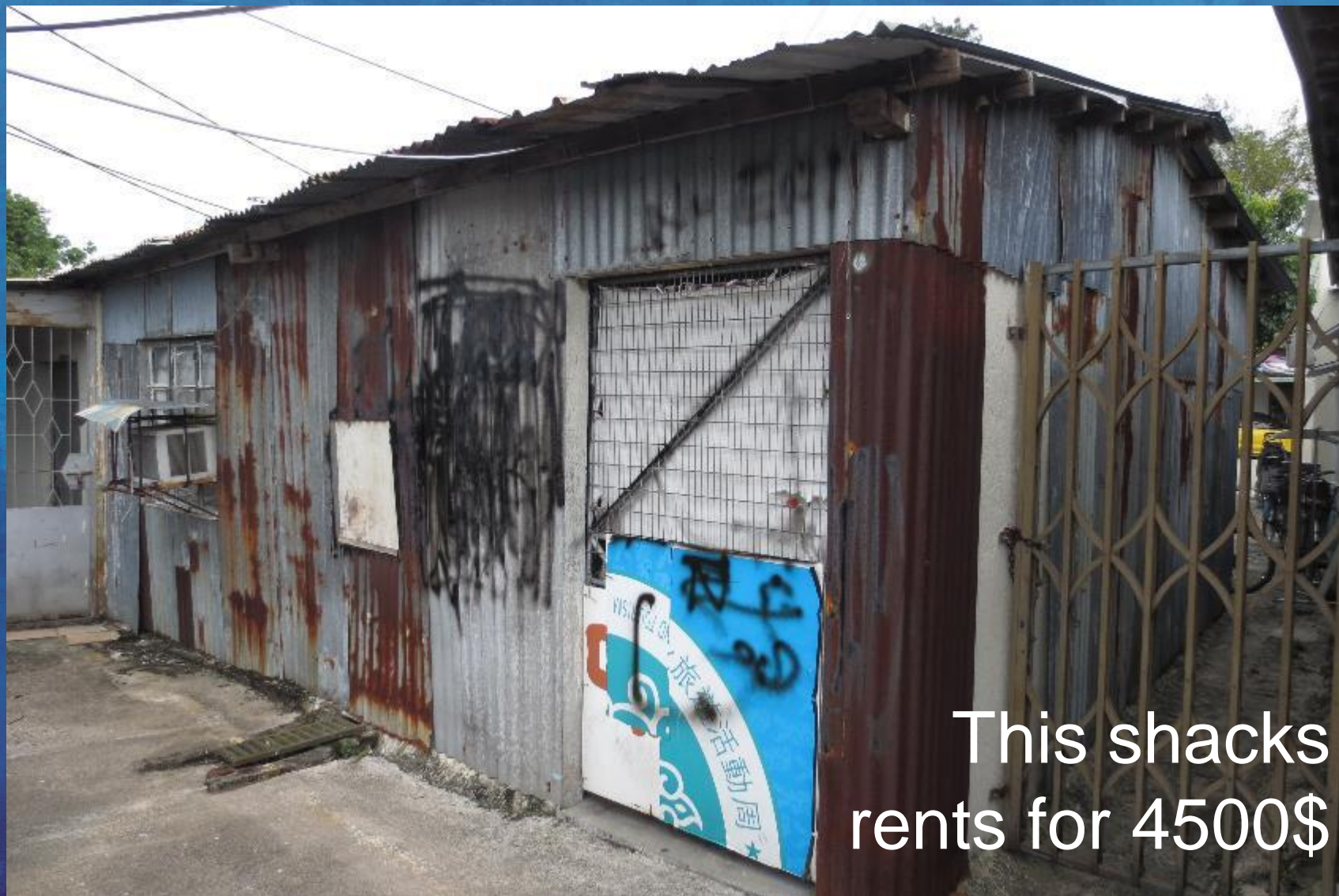
SAFEGUARDING REFUGEE RIGHTS



High rents forced
refugees out of
these shacks

[VISION
FIRST]

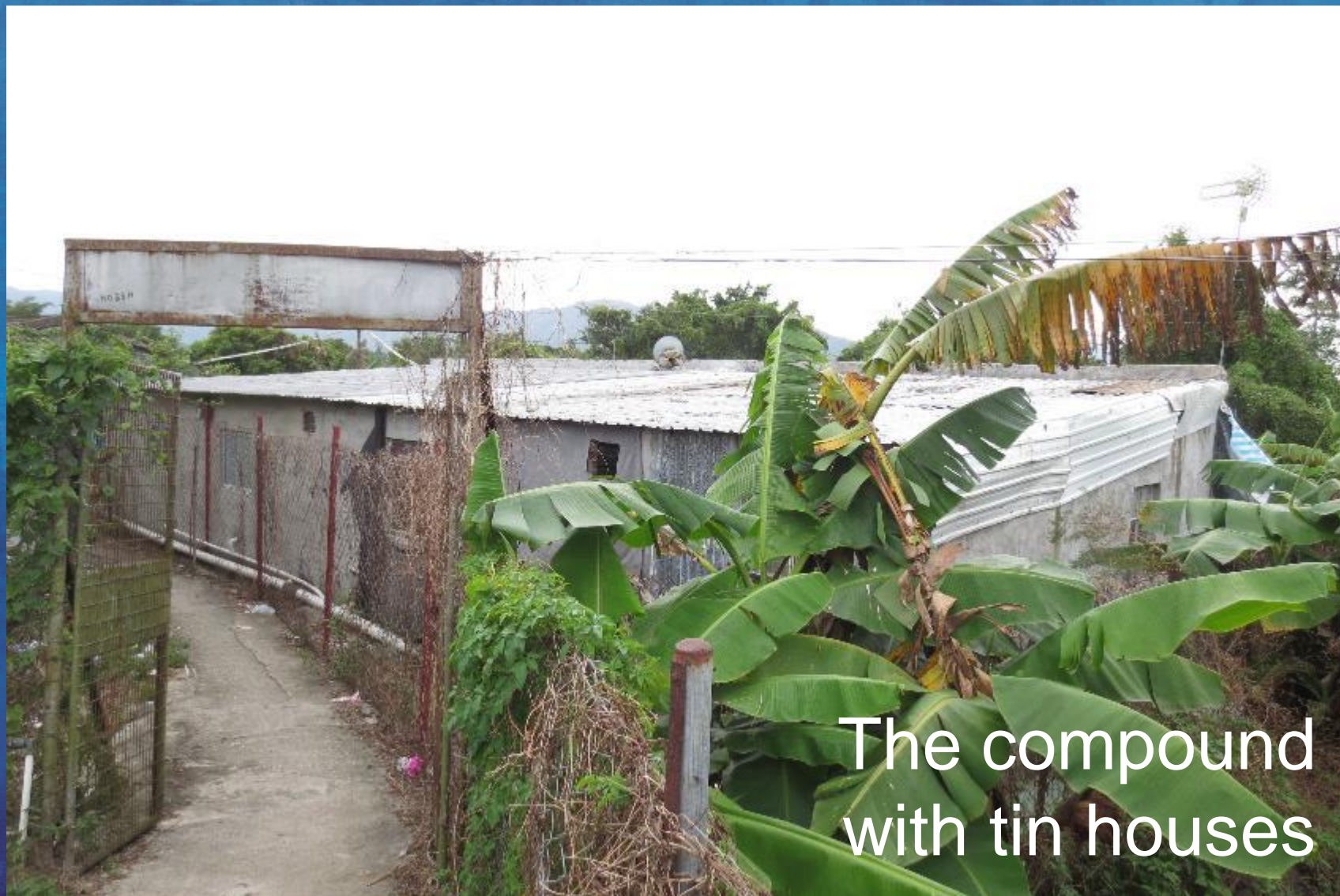
SAFEGUARDING REFUGEE RIGHTS



This shack
rents for 4500\$

[VISION
FIRST]

SAFEGUARDING REFUGEE RIGHTS



The compound
with tin houses

[VISION
FIRST]

SAFEGUARDING REFUGEE RIGHTS



A sense of
desolation

[VISION
FIRST]

SAFEGUARDING REFUGEE RIGHTS



He has lived here
over 3 years

[VISION
FIRST]

SAFEGUARDING REFUGEE RIGHTS



[VISION
FIRST]

SAFEGUARDING REFUGEE RIGHTS



“TALO” is a
gangster boss

[VISION
FIRST]

SAFEGUARDING REFUGEE RIGHTS



[VISION
FIRST]

SAFEGUARDING REFUGEE RIGHTS



[VISION
FIRST]

SAFEGUARDING REFUGEE RIGHTS



Maybe not so
“Lucky”

[VISION
FIRST]

SAFEGUARDING REFUGEE RIGHTS



It feels like a
ghost-town

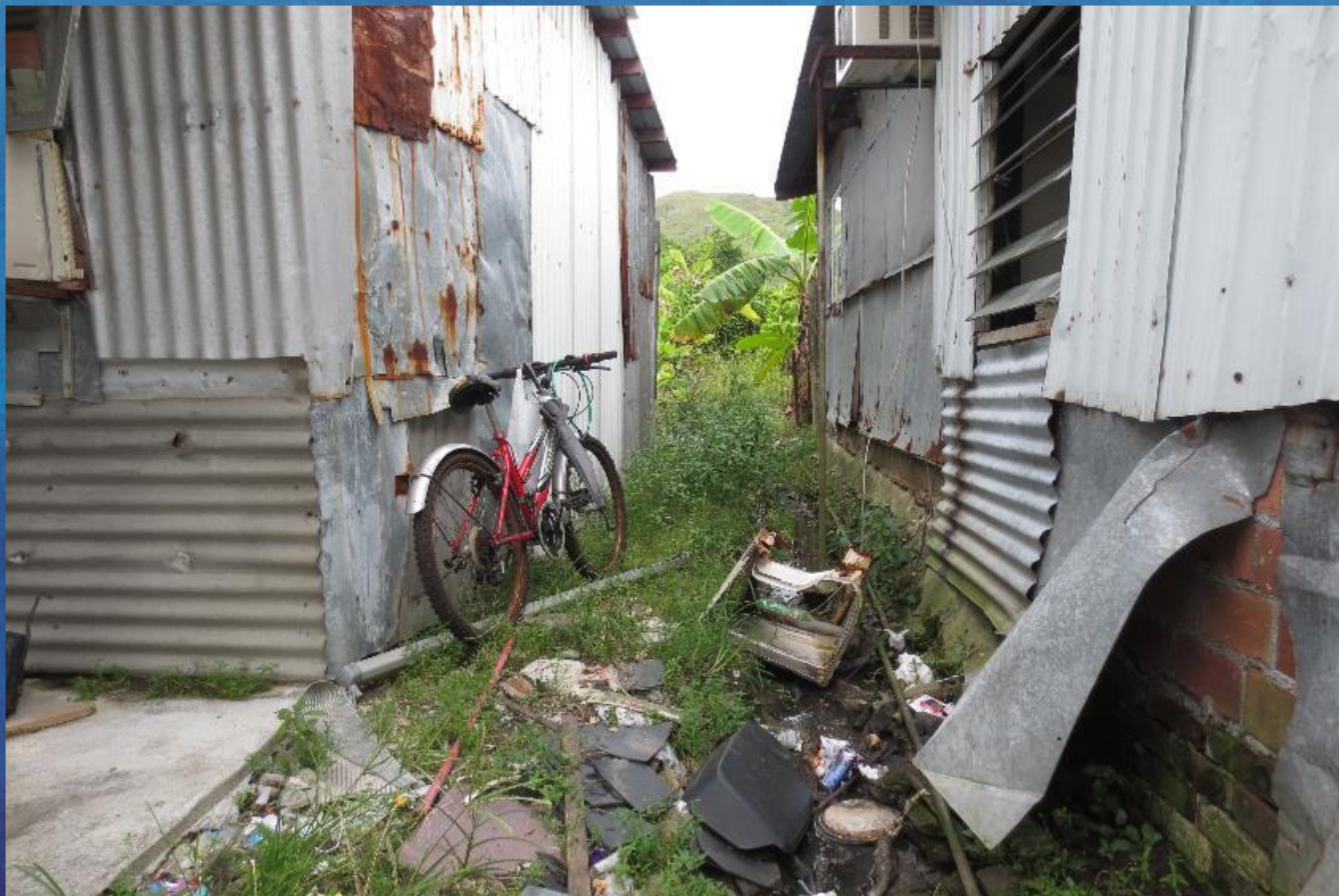
[VISION
FIRST]

SAFEGUARDING REFUGEE RIGHTS



[VISION
FIRST]

SAFEGUARDING REFUGEE RIGHTS



[VISION
FIRST]

SAFEGUARDING REFUGEE RIGHTS



[VISION
FIRST]

SAFEGUARDING REFUGEE RIGHTS



[VISION
FIRST]

SAFEGUARDING REFUGEE RIGHTS



[VISION
FIRST]

SAFEGUARDING REFUGEE RIGHTS



[VISION
FIRST]

SAFEGUARDING REFUGEE RIGHTS



[VISION
FIRST]

SAFEGUARDING REFUGEE RIGHTS



[VISION
FIRST]

SAFEGUARDING REFUGEE RIGHTS



Metal sheets
weather-proof
sub-standard
brick and
mortar walls

[VISION
FIRST]

SAFEGUARDING REFUGEE RIGHTS