

# THE SLUM IN THE BUILDING

## PAT HEUNG #3

This isn't the typical slum in an illegal structure; in fact, this building is sound and in tenantable condition. This report shows how an apartment is subdivided and rented to ISS-HK.

9 refugees share a flat where rooms are divided into smaller spaces for maximum profit. There are *rooms* even in the lounge and corridor – with air-con units giving off heat inside!

Most urban refugees live in comparable spaces that extort maximum profit from those who cannot afford any better. In every case landlords charge high electricity fees with impunity.



[VISION  
FIRST]

SAFEGUARDING REFUGEE RIGHTS





[VISION  
FIRST]

SAFEGUARDING REFUGEE RIGHTS

A room with air-  
con in a hallway



[VISION  
FIRST]

SAFEGUARDING REFUGEE RIGHTS





[VISION  
FIRST]

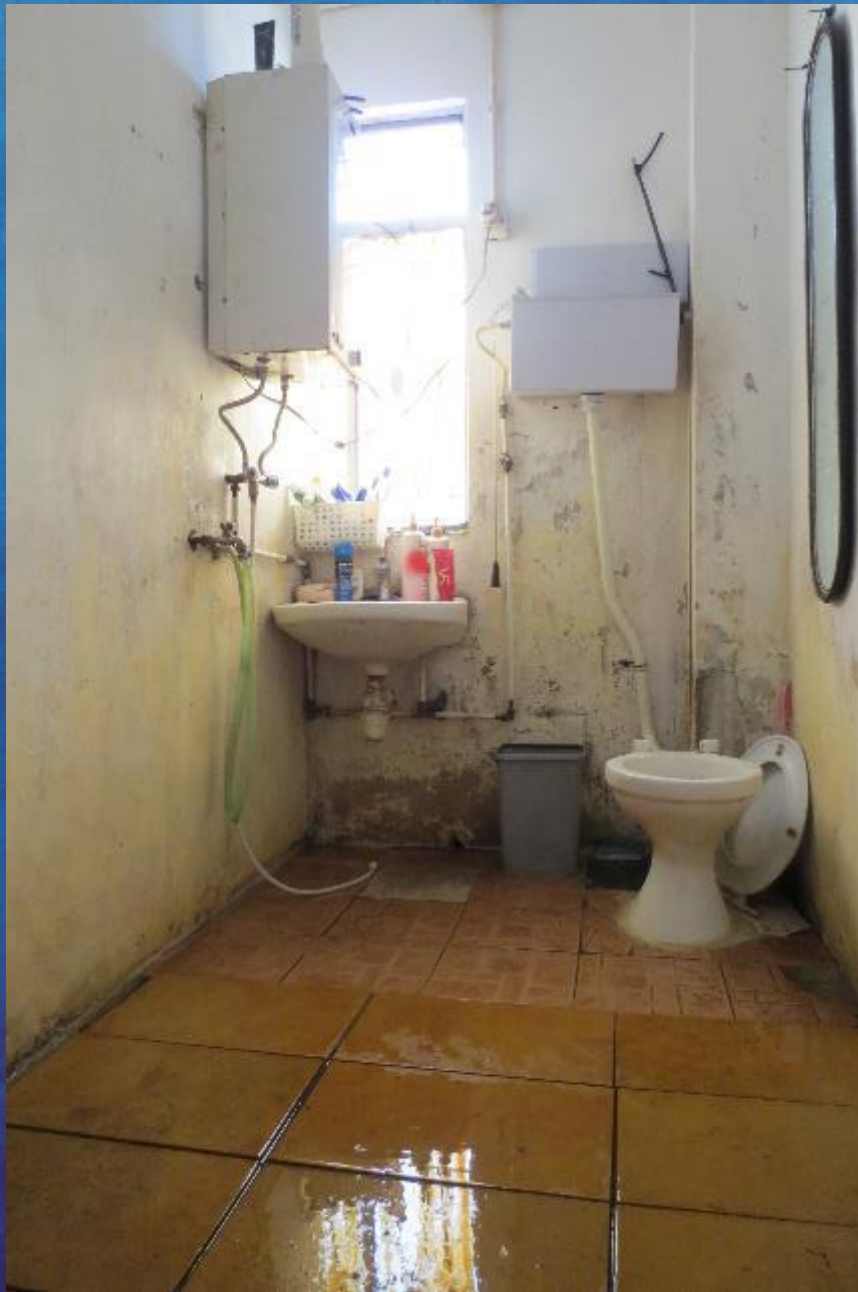
SAFEGUARDING REFUGEE RIGHTS



[VISION  
FIRST]

SAFEGUARDING REFUGEE RIGHTS





**SAFEGUARDING REFUGEE RIGHTS**



[VISION  
FIRST]

SAFEGUARDING REFUGEE RIGHTS





[VISION  
FIRST]

SAFEGUARDING REFUGEE RIGHTS



[VISION  
FIRST]

SAFEGUARDING REFUGEE RIGHTS





Leaky ceiling



Partition divides  
one room into two

[VISION  
FIRST]

SAFEGUARDING REFUGEE RIGHTS





One room  
becomes three

[VISION  
FIRST]

SAFEGUARDING REFUGEE RIGHTS



[VISION  
FIRST]

SAFEGUARDING REFUGEE RIGHTS



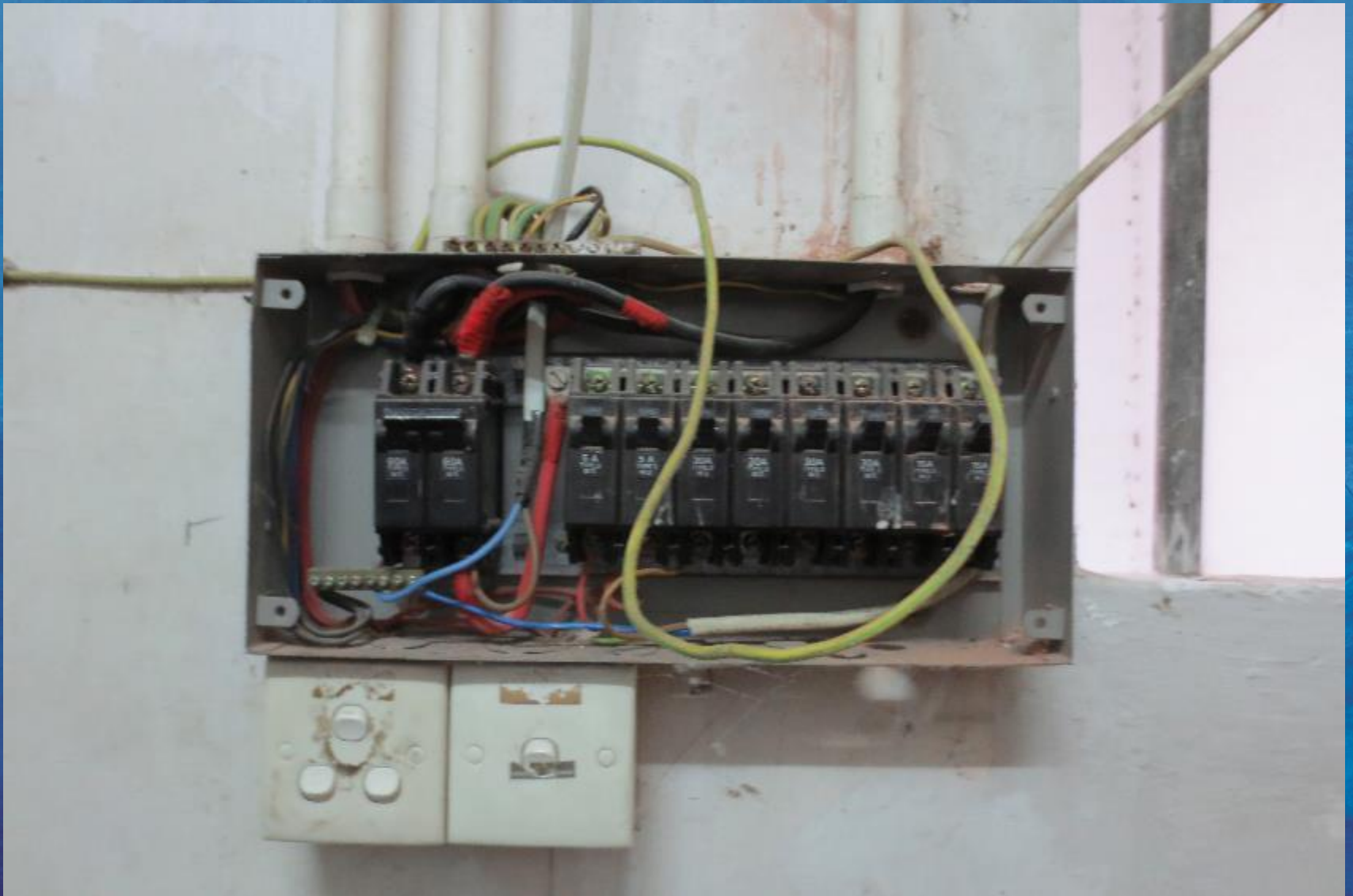




[VISION  
FIRST]

SAFEGUARDING REFUGEE RIGHTS





[VISION  
FIRST]

SAFEGUARDING REFUGEE RIGHTS



[VISION  
FIRST]

SAFEGUARDING REFUGEE RIGHTS