

THE SLUM IN THE GARDEN

YUEN LONG #5

Here is a small cluster of huts erected behind a vegetable patch. It's been here for four years. The farmer landlord has been cashing in on the refugee bonanza offered by ISS.

These sheds are rudimentary and unfit for human living. Last night they were dangerously pounded by Typhoon Usagi.

We query whether ISS case workers consider severe weather risks when approving such rickety huts as refugee homes./

Would ISS be responsible for any injury or death?



[VISION
FIRST]

SAFEGUARDING REFUGEE RIGHTS



Squalid sheds
for refugee
homes

[VISION
FIRST]

SAFEGUARDING REFUGEE RIGHTS



Little more than a garden shed

**VISION
FIRST**

SAFEGUARDING REFUGEE RIGHTS



His previous hut flooded ...

**[VISION
FIRST]**

SAFEGUARDING REFUGEE RIGHTS



So he hopes this will be safer

**[VISION
FIRST]**

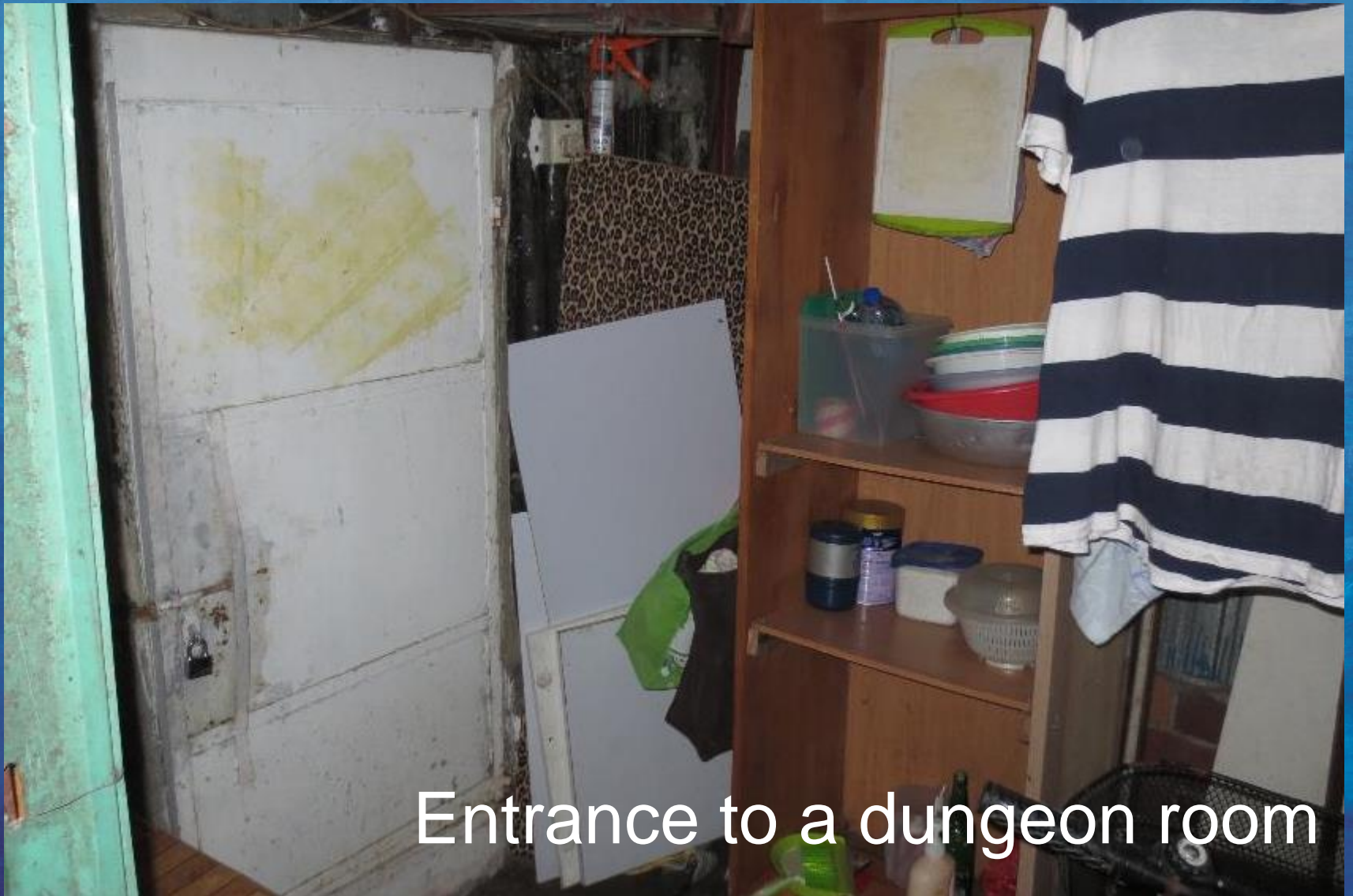
SAFEGUARDING REFUGEE RIGHTS



These
washrooms
meet ISS
standards, but
fail to comply
with the
Building
Ordinance

[VISION
FIRST]

SAFEGUARDING REFUGEE RIGHTS



Entrance to a dungeon room



Kitchen
toilet
shower
combo

[VISION
FIRST]

SAFEGUARDING REFUGEE RIGHTS



Shed, shack or home?

[VISION
FIRST]

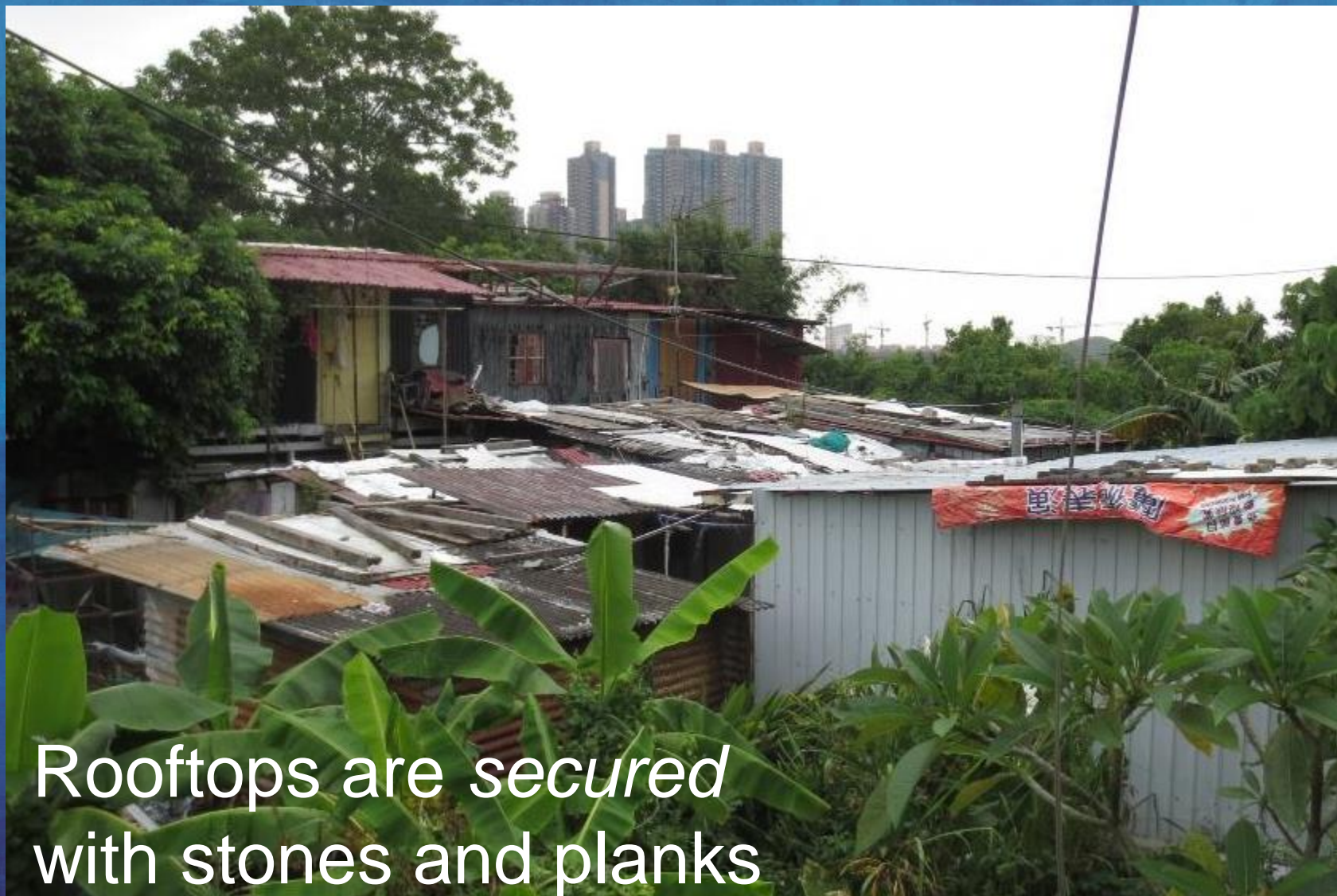
SAFEGUARDING REFUGEE RIGHTS

Refugees are
dehumanized
by these
conditions



[VISION
FIRST]

SAFEGUARDING REFUGEE RIGHTS



Rooftops are *secured*
with stones and planks

[VISION
FIRST]

SAFEGUARDING REFUGEE RIGHTS



Notice the gaps in this hut
(in a nearby cluster)

[VISION
FIRST]

SAFEGUARDING REFUGEE RIGHTS



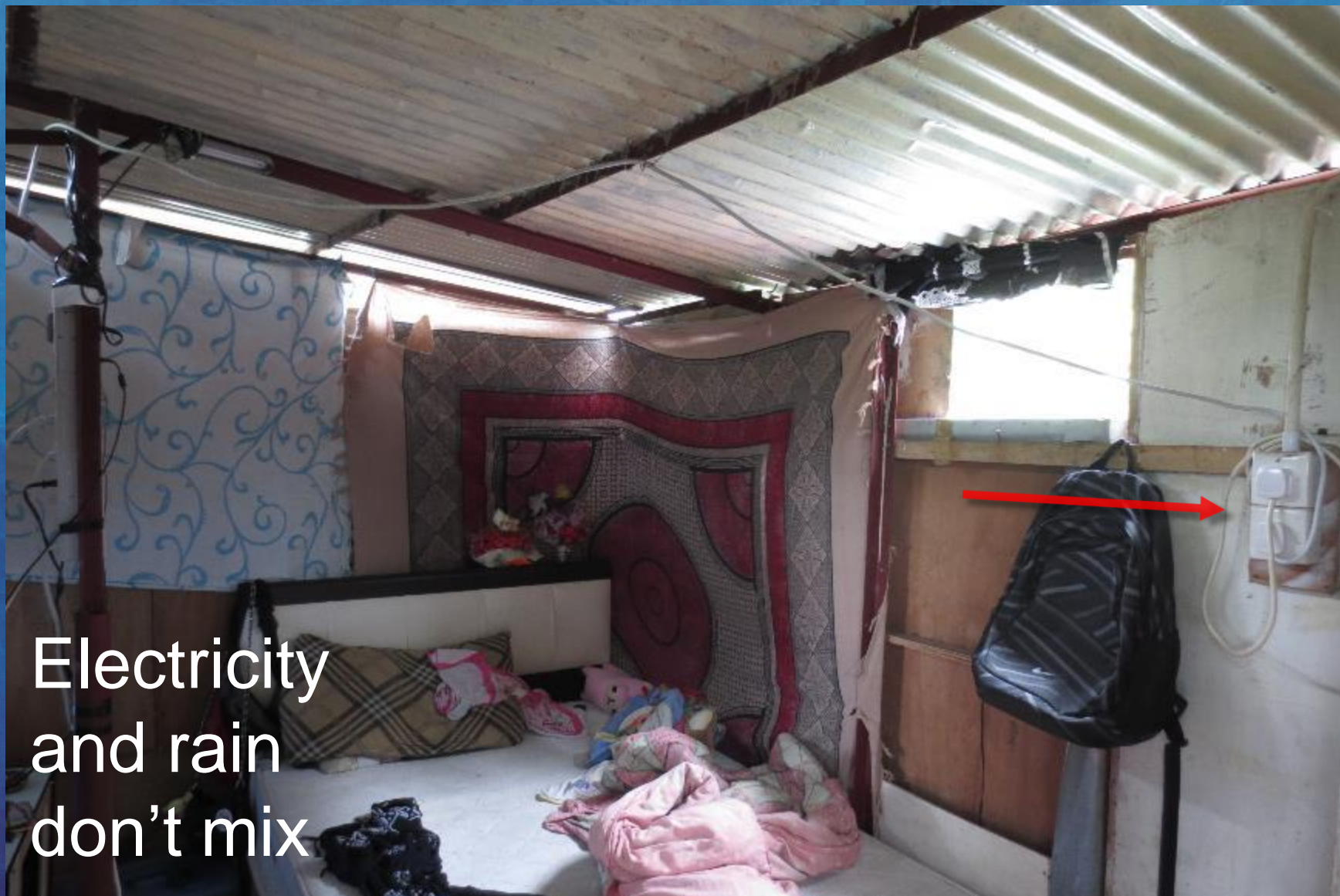
These gaps
are wide
open to the
wind



A metal pole
keeps the
roof in place
(barely)

[VISION
FIRST]

SAFEGUARDING REFUGEE RIGHTS



Electricity
and rain
don't mix

[VISION
FIRST]

SAFEGUARDING REFUGEE RIGHTS



ISS asks refugees if they want to stay in the slums or leave

**[VISION
FIRST]**

SAFEGUARDING REFUGEE RIGHTS



... but ISS offers 1200\$ monthly rent
and no financial assistance.

**[VISION
FIRST]**

SAFEGUARDING REFUGEE RIGHTS