

# THE SLUM IN THE FACTORY

## - NAI WAI #4

This processing plant wasn't built to house refugees.

Today this concrete complex is home to 30 ISS clients.

A greedy landlady modified it into a 'beehive' of little rooms, disgusting 'toilets' in sub-human conditions that should be documented for National Geographic!

This complex defies explanation and photos cannot convey the overwhelming shame we felt about ISS.

































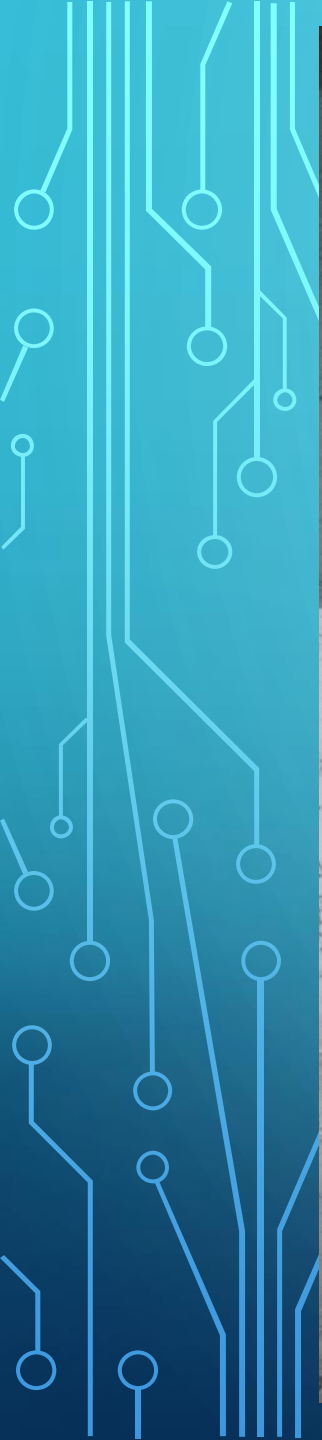


















What is this  
space?

....

It's a shower!  
30 refugees  
have to line  
up in the  
morning to  
use these  
primitive  
facilities.



This whole in  
wall is a  
toilet.

There is a  
hose and a  
bucket to  
flush it.

Where  
effluents  
flow we  
didn't want  
to find out.



The landlady sits comfy as she rakes in the \$\$\$\$

