

THE SLUM BEHIND THE MOSQUE

PING CHE #5

We first visited this ghetto in January 2011, two and half years before the slums in Ping Che received worldwide notoriety. Illegal shacks had already been erected around a small house.

In October 2013 there still are 17 ISS clients living in this complex, exploited by a slum lord who is making a living off refugees forced to pay rent balances and excessive utilities.


The conditions are not the worse, though plywood walls and metal sheet roofs hide the structural unsoundness of these rooms. Only 4 rooms would pass a Building Dept. inspection.



The mosque
that gives this
slum its name

[VISION
FIRST]

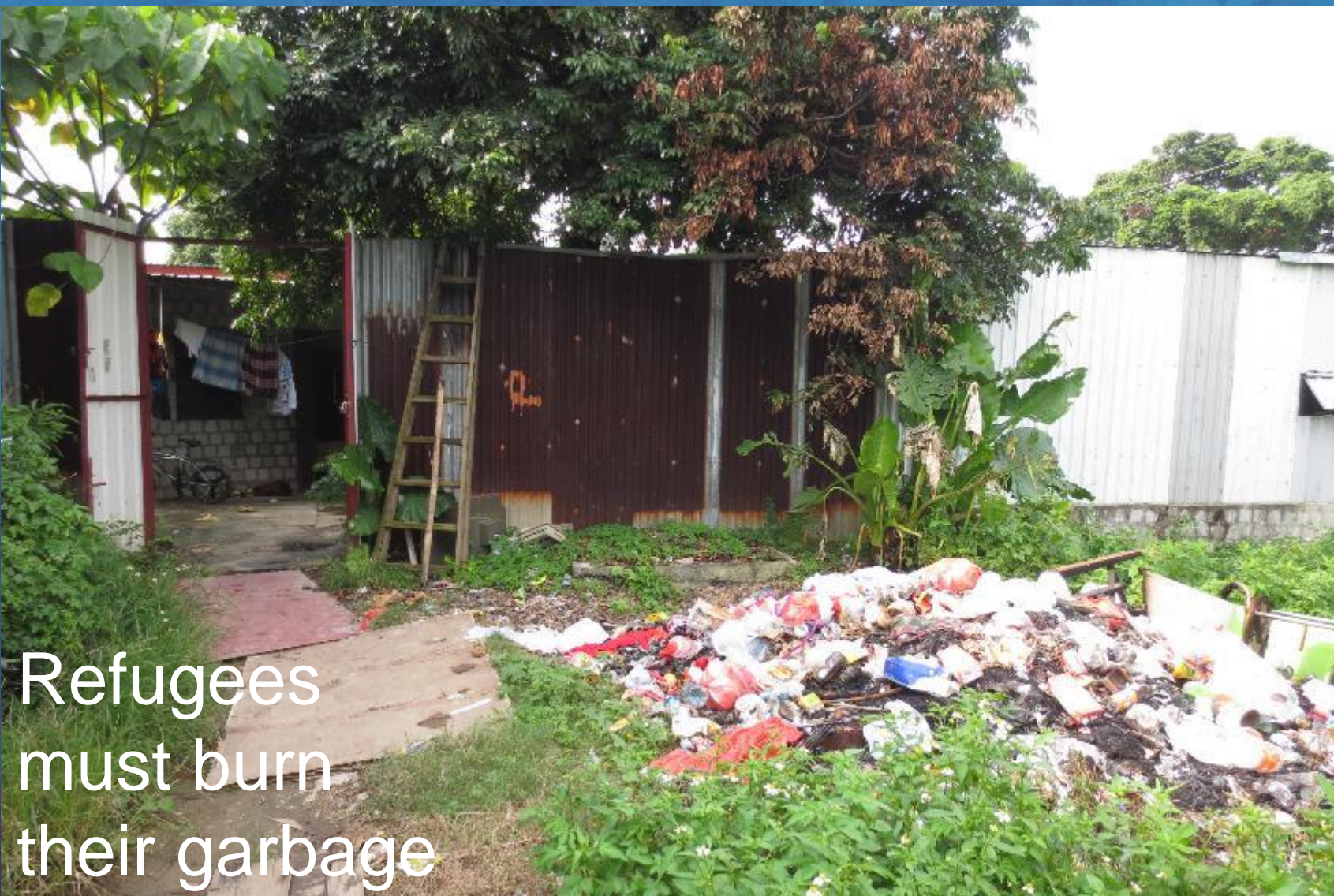
SAFEGUARDING REFUGEE RIGHTS



Beyond the
bushes a
ghetto emerges

[VISION
FIRST]

SAFEGUARDING REFUGEE RIGHTS



Refugees
must burn
their garbage

[VISION
FIRST]

SAFEGUARDING REFUGEE RIGHTS



Metal sheets
keep prying
eyes out

[VISION
FIRST]

SAFEGUARDING REFUGEE RIGHTS



SAFEGUARDING REFUGEE RIGHTS



One legal
brick structure
the rest is not

[VISION
FIRST]

SAFEGUARDING REFUGEE RIGHTS



[VISION
FIRST]

SAFEGUARDING REFUGEE RIGHTS



Metal huts
metal roofs

[VISION
FIRST]

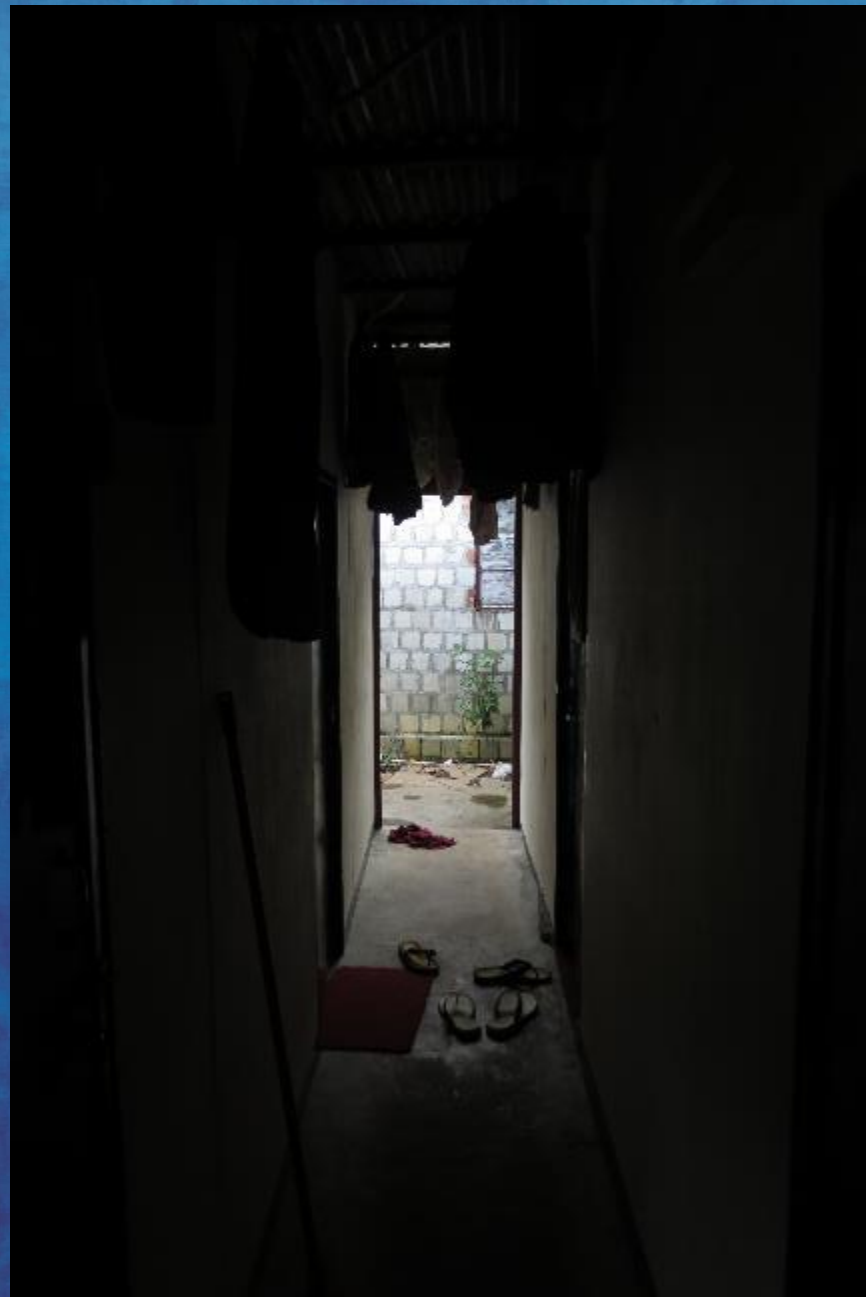
SAFEGUARDING REFUGEE RIGHTS



A toilet
kitchen
combo

[VISION
FIRST]

SAFEGUARDING REFUGEE RIGHTS



SAFEGUARDING REFUGEE RIGHTS

Before VF
ISS never
paid their gas





SAFEGUARDING REFUGEE RIGHTS



SAFEGUARDING REFUGEE RIGHTS



SAFEGUARDING REFUGEE RIGHTS



SAFEGUARDING REFUGEE RIGHTS



Shacks nearby

[VISION
FIRST]

SAFEGUARDING REFUGEE RIGHTS



[VISION
FIRST]

SAFEGUARDING REFUGEE RIGHTS